

Tasmania

Hobart-Strahan-Cradle Mountain-Launceston-Freycinet NP-Port Arthur-Hobart

8 days / 7 nights Coach Tour From: NZ\$ 3,990pp

Day 1 Sun 03 Oct 21 HOBART D

On arrival into Hobart, you will be transferred to your city hotel. The rooms will be available from 3pm. Please meet your tour escort and your fellow travellers for a welcome dinner at 6pm in the hotel lobby.
Hotel: Vibe Hotel Hobart

Day 2 Mon 04 Oct 21 HOBART CITY TOUR B

During this morning's sightseeing tour, you will be introduced to Hobart's streets, Battery Point, the Royal Tasmanian Botanical Gardens and Constitution Dock. You will then visit Mt. Wellington for panoramic views of Hobart and the surrounding area. Last stop is Salamanca Place, where you will have the afternoon at leisure. Wander around the heart of Hobart or take the Ferry to MONA (Museum of Old and New Art), one of the most fascinating and talked about museums in Australia.
Hotel: Vibe Hotel Hobart

Day 3 Tue 05 Oct 21 HOBART—THE WALL IN THE WILDERNESS—LAKE ST CLAIRE—STRAHAN B,D

After breakfast, you will depart for your scenic journey to Strahan. First stop is New Norfolk, one of the oldest towns in Australia, having been established in 1807 by farming families resettled from Norfolk Island. At Mt. Field National Park, you will walk through the rainforest to Russell Falls. Afterwards you will visit The Wall in the Wilderness, Australia's most ambitious art project undertaken in recent years. It is Artist Greg Ducan's plans to carve the history of the highlands in 100 metres of timber, most of which will be in rare Huon Pine. The beautifully carved works set out in relief sculpture depict the history, hardship and perseverance of the people in the Central Highlands and pay homage to the individuals who settled and protected the area. You will then continue your journey with a stop at Lake St. Clair, the deepest freshwater lake in Australia before arriving in Strahan, the gateway to the World Heritage listed Franklin-Gordon Wild Rivers National Park. Tonight, you will enjoy a 3 course Dinner.

Optional: You may choose to visit the longest-running theatre production in Tasmania "The Ship that Never Was". The Play is dramatic, hilarious, and a true story of a cunning plan to escape from the convict ship-building settlement of Sarah Island and a reminder of the way that the human spirit cannot be broken. (\$25.00 per person)

Hotel: Strahan Village

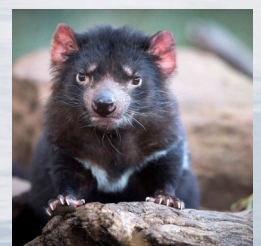
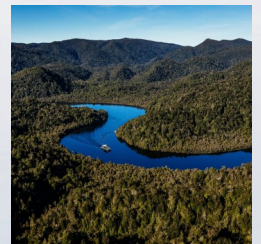
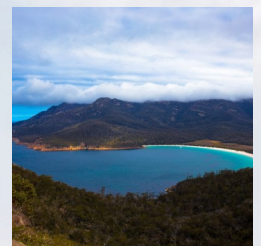
Day 4 Wed 06 Oct 21 STRAHAN — GORDON RIVER CRUISE — CRADLE MOUNTAIN B,L

Today you will experience the UNESCO Tasmanian World Heritage Wilderness Area from the water – it is one of the most fascinating River Cruises in Australia. Cruise aboard Spirit of the Wild the national award-winning Gordon River Cruise, where you will experience quiet cruising with electric motors while taking in the tranquil surrounds of the Gordon River and enjoying a delicious cold buffet lunch. The dedicated guides and character-based interpretation will take you through the history of this remarkable place as you cruise across Macquarie Harbour to Hells Gates and then on to the Gordon River. Go ashore at Heritage Landing, the site of a 2,000-year-old Huon Pine and visit Sarah Island, where you get an insight into Tasmania's lesser-known convict history. After the cruise you will continue your journey to Cradle Mountain. Tonight, you may choose to do an optional experience: Devils@Cradle, a 90-minute tour which focus is the social interactions and feeding habits of the endemic Tasmanian devil.

Hotel: Cradle Mountain Hotel

Day 5 Thu 07 Oct 21 CRADLE MOUNTAIN — LAUNCESTON B,D

After an early breakfast, you will visit Cradle Mountain National Park. Here, you will experience one of the Premier walks in Tasmania, The Dove Lake Walk. Starting from Dove Lake, a glacially carved lake directly beneath Cradle Mountain, the walk offers both intimate and epic views of the famous mountain. The walk undulates around Dove Lake, traverses beneath the mountain, then returns through magnificent rainforest to the starting point. It will also take you through some of Tasmania's special vegetation, from button grass to myrtle, sassafras, fagus and King Billy pine. You may also spot Bennett's wallabies, echidnas, and pademelons along the way. Also, keep an eye out for wombats, the world's largest burrowing mammals. You are most likely to see the teddy-bear shape of a grazing wombat at dawn/dusk, as they feed in open grasslands. Afterwards you will continue your journey towards Launceston. First stop is Sheffield, which is located in the foothills of majestic Mount Roland. A friendly rural town where history and art merge to create an entire town of murals. Once a centre for industry, the town has reinvented itself as an arts community. You will also stop at the award-winning Ashgrove Cheese Farm.



Superb traditional English country cheeses, such as Cheddar and Lancashire are produced by Cheese-maker Jane Bennett, who honed her skills in England before putting them to good use in the family business. Despite adhering to traditional techniques, she has not been afraid to push the boundaries, producing niche products such as wasabi cheese and lavender cheese. Arrival in Launceston, where you will enjoy a delicious 3 course Dinner.

Hotel: Grand Chancellor Launceston

Day 6 Fri 08 Oct 21 LAUNCESTON — FREYCINET NATIONAL PARK

B

On the way to Freycinet National Park, you will stop at the Bridestowe Lavender Estate. Here, you can see stunning lavender fields, along with many hectares of native vegetation and wildlife. Inside their Visitors Centre, you can experience a vast range of unique lavender products. Next stop is the picturesque east coast town of Bicheno. The Blowhole in Bicheno is arguably the best in Tasmania and really gets going when there is a Tasman Sea swell. There are photo opportunities when the waves create huge spray through the gorgeous, orange-coloured rocks. From here, you will continue to your accommodation for the night. Time stands still from the moment you arrive at Freycinet Lodge. Overlooking the blue waters of Great Oyster Bay and with the rugged Hazards mountain range as your backdrop, the location of Freycinet Lodge's accommodation in Freycinet National Park is second to none.

Hotel: Freycinet Lodge

Day 7 Sat 09 Oct 21 FREYCINET NATIONAL PARK — PORT ARTHUR — HOBART

B,D

This morning you will immerse yourself in the beautiful Freycinet National Park, taking a guided walk to the lookout at Cape Tourville, where you will have remarkable coastal views of Freycinet National Park including the Hazards, Wineglass Bay and nearby offshore rocks known as The Nuggets. This easy walk is a great way for everyone to experience Freycinet. Keep an eye out for wildlife. Sea birds, sea-eagles, whales, seals and dolphins. Afterwards you will visit the UNESCO World Heritage-listed Australian Convict Site Port Arthur, from where you will take a cruise around the Isle of the Dead and a fascinating guided walking tour around the remains of Port Arthur's infamous convict prison. On the drive towards Hobart, you will stop at Unzoo, where you can get up close with Australian native animals, some of which went extinct long ago in other parts of Australia. Upon your arrival into Hobart, you will enjoy a farewell dinner down by Constitution Dock.

Hotel: Vibe Hotel Hobart

Day 8 Sun 10 Oct 21 HOBART

B

Your tour will conclude today following breakfast and your transfer to the Airport.

TOUR INCLUSIONS:

Transfer Airport Hobart to Hotel
Seven nights in excellent accommodation including
Breakfast Daily (B)
Modern air conditioned vehicle as per Itinerary outline
Experienced tour escort as per Itinerary outline
Meals as stipulated in Itinerary include 1x Lunch, 4x Dinners
National Park entry fees
Sightseeing includes

- Hobart Sightseeing Tour
- The Wall in the Wilderness
- Award-winning Gordon River Lunch Cruise
- Cradle Mountain National Park
- Ashgrove Cheese Farm
- Orientation Tour Launceston
- Freycinet National Park
- Port Arthur Historic Site
- Unzoo Entry Fee

Transfer Hotel to Hobart Airport

PAYMENTS:

A non-refundable deposit of \$200 per person is required at the time of booking. The balance of the tour price is required 45 days prior to your travel date. If you book inside 45 days, full payment will be required at the time of booking. Payment can be made by bank transfer. If you cancel between 21 and 45 days prior to your date of travel 30% of your tour cost will be charged. If you cancel between 8 and 20 days prior to your tour departure you will be charged 50% of your tour cost. Cancellations within 7 days of departures will incur a 100% cancellation charge.

TOUR PRICE:

NZ\$ 3,990.00 Per Person on a Share Twin Basis

Single Supplement:

Additional NZ\$ 1,055.00 per person

TOUR DATES:

03.10. — 10.10.2021

* minimum 10 passengers to guarantee departure

TOUR EXCLUSIONS:

International Air Fares, Additional /Optional Tour Costs, Hotel Mini Bar, Sightseeing/Meals not stated in Itinerary

Inspired New Zealand Tours

Operated by Terra Nova Tours Ltd.

Unit 2 / 25 Churchill Street

PO Box 4026, Christchurch 8140

www.inspiredNZtours.co.nz

Email: info@inspiredNZtours.co.nz

Ph 03 379 9126

Freephone 0800 422 126

TERMS AND CONDITIONS:

Full Terms and conditions are listed on the Inspired New Zealand Tours website. When a booking is made it is accepted that these are agreed to. They include the following: Itineraries are correct when initially published, however are subject to change due to circumstances outside our control. Flights are the responsibility of the passenger and Inspired New Zealand Tours takes no responsibility for costs involved for any changes to flights that might be required due to necessary amendments in itineraries.

